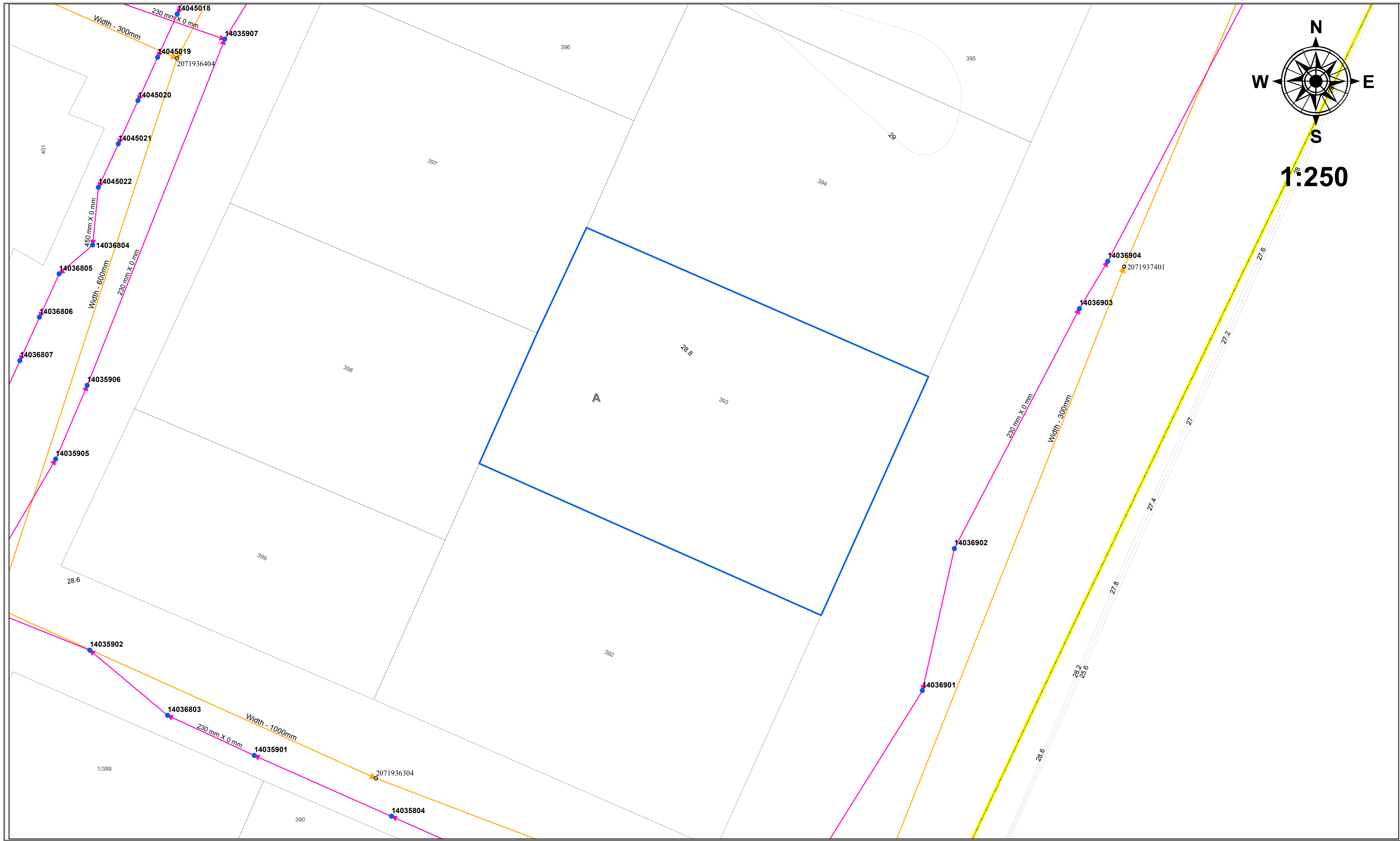



1:250

Brihanmumbai Municipal Corporation
(Development Plan Department)

Land Bearing CTS No(s) 393 of COLABA Village in A Ward

This plan is to be read with additional information given in letter no CHE/DP34202405111532232/DP/City/A

Legend

- Sewer Manholes
- SWD Manholes
- Traffic RoadLines
- Survey RoadLines
- Contours
- SewerLines
- Storm Water Drains
- Ward Boundary

Generated On: 5/6/2024